







## INDEX

<b>COMPANY</b>	<b>COMPANY</b>	04
	<b>DISTRIBUTORS</b>	07
<b>INSTRUMENTS</b>	<b>EVENT SERIES</b>	08
	<b>EVENT</b>	10
	<b>EVENT61</b>	12
	<b>EVENT CHROM</b>	14
	<b>EVENT X</b>	16
	<b>EVM</b>	18
	<b>EVM PLUS</b>	20
	<b>EVS</b>	22
	<b>GLOBE</b>	23
	<b>FUSION</b>	26
	<b>DIGITAL ACCORDIONS</b>	30
<b>AMPLIFICATION</b>	<b>TWIN ARRAY PLUS</b>	32
	<b>ACT SAT</b>	34
	<b>SM6</b>	36
	<b>MIRA</b>	36
	<b>6CX</b>	37
<b>ACCESSORIES</b>	<b>MONITOR</b>	38
	<b>STAND</b>	39
	<b>POWER SUPPLY</b>	39
	<b>PEDALS</b>	40
	<b>HARD CASES</b>	42
	<b>DELUXE HARD CASES</b>	43
	<b>BAGS</b>	44

# KETRON

BEST ORIGINAL SOUNDS



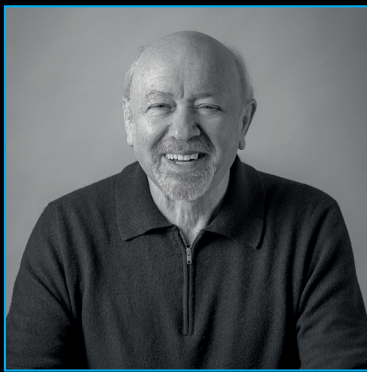
## Factory

Located in the industrial area of Ancona, KETRON was established in 1981 with the mission of designing and manufacturing electronic musical instruments. In its early years, the company focused primarily on producing electronic organs. Over time, the production shifted towards lighter, more portable arranger keyboards and modules. These instruments became a standard for solo performers in live entertainment and piano bars during the 1990s, earning widespread acclaim for their quality and exceptional durability. Staying true to its founding principles, KETRON continues its relentless pursuit of excellence in sound and arrangement quality. Leveraging cutting-edge technology, the company creates uniquely crafted instruments tailored to meet the needs of the most demanding professionals.





**MAURIZIO LEONARDI**  
*Founder - Hardware and  
software manager*



**ALESSANDRO FONTANELLA**  
*Founder / Sound Designer  
Research & Development*



**MARCO PANNI**  
*Sales Manager*



# COMPANY



# KETRON

BEST ORIGINAL SOUNDS







KETRON in the world.



# EVENT SERIES

## The new State-of-the-Art Arranger Line

At KETRON we want to craft the most innovative, inspiring and original musical keyboards that can ever be produced today with the technology of tomorrow. This time we have challenged ourselves with more in-depth studies, intense experimental research and hard-working studio sessions, by involving great international musicians. We aim to offer to professionals and to the most demanding music lovers an instrument that would represent the new State-of-the-Art Arranger keyboard in the world. We did not stop until we reached the highest quality standards, so that cutting-edge technology could also generate the most realistic sounds. The result of our hard and passionate work is the EVENT product's line.

Try it out these products and experience what it means to play accompanied by a full band of real musicians. Now you can play jam sessions with a Grand Piano sound imagining a jazz trio playing behind you. If you love dance music, you can bring EVENT with you on stage: the realism of the arrangements will ensure everyone's attention in a packed lively dance floor.

Playing with an EVENT instrument is a special emotion. We are delighted to share it with you.

## ARRANGER

EVENT SERIES is designed to provide easy access to the most sophisticated style architecture ever developed on an arranger keyboard. It comes with over 500 Styles, divided into Real Styles, Live Styles or MIDI Styles. The Real Styles, with their impressive authenticity, stand out thanks to the backing tracks in full audio format. Event Series features a rich manual Lower section, with three independent parts and Mono / Poly modes. You can use the new advanced Style Edit to program your new styles and save any customized configuration in the User memory.

## DRUMS

The rhythm section features over 580 Real Drums and complete drum patterns with Intro, Ending, 4 Variations, Fill and Break, covering a wide variety of musical genres. Unlike other musical instruments, where the rhythmic sequences are mostly short loops controlled via MIDI, EVENT SERIES has real studio recordings of professional drummers, available in eight or more measures, without any cuts or editing. The result is incredibly smooth and natural. EVENT SERIES provides Real Drum track equalization, as well as Drum Lock mode which loops the rhythmic pattern that is being played. Furthermore, there are 94 new stereo Drum Sets: with Drum Mixer and Remap, you can reassign the individual percussion sounds and save them in one of the 32 available User Drum locations. The Groove section is outstanding, with over 700 percussive sequences, three independent Groove parts that control House, Hip Hop and Latin loops, as well as an amazing variety of Afro-Cuban, Brazilian or Latin percussion instruments, including Conga, Shaker, Maracas, Cowbell, Cajon, Tambourine and many more.

## BASS

The Bass section provides a wonderful library of 256 Real Bass: bass lines that are recorded in studio by real bass players on various tones and perfectly synchronized with the rhythm of the style. It is impossible to not be carried away by the energy of these bass lines, from traditional Ballads, Soul rhythms, to Disco Funk.

The tone color, the correct finger positions on the neck and all the natural vibes of the performer give the sensation of playing with a real bassist next to you! Real Bass adapts naturally to chord changes, as if it were a normal MIDI bass, even playing To Lowest mode with the bass upside

down on the lowest note! It is very easy to switch between MIDI and Audio bass in real time (Twin Bass), modify the voice of the Real Bass using a parametric equalizer or lock the current set using the Lock Bass mode. The series of functions available for Bass such as Manual, To Lowest, To Root and Bassist are particularly refined: for example, the latter recognizes the chord by combining the notes played both on the right part and on the Manual bass part. Finally, the Multibass supports custom Bass progressions for various chords.

## CHORDS

Real Chord is at the same time the most elaborate and entertaining feature of EVENT SERIES.

You can control many guitar tracks or other instruments in real time: everything can be performed on several tonalities, including all chords on the scale. More than 300 Real Chords, including a wide variety of recordings such as Folk, Jazz, Nylon, Electric guitar, and other instruments like sax, harmonica, violin, trumpet and so on, are all perfectly synchronized with MIDI into the arranger architecture.

The Real Chord features a dedicated EFX Insert with Chorus, Eq, Overdrive, Phaser, Wah and other effects.

The Real Chord pattern can be locked using the Lock Chord function to obtain "ostinato", peculiar to the Disco Funk genre. Just listen to one of EVENT SERIES Unplugged styles and get ready to be amazed by the authentic sound of a simple acoustic guitar. EVENT SERIES has also a vast library of Live Guitars (guitar loops managed by slices and controlled via MIDI), Long Chord and five MIDI chords, capable of playing simultaneously and with different voices and volume. Another noteworthy feature is the Multichord section, with piano accompaniments, strings and other orchestral parts programmed for any given tones.



## MODELING

The powerful Audio Style Modeling system was engineered to offer an enormous variety of musical solutions, with the possibility of managing both the audio tracks of Real Drum, Real Bass and Real Chord and the orchestral MIDI tracks that you want to add to the arrangement. Navigation is easy and you can create new rhythmic or harmonic patterns within a few seconds. EVENT SERIES is also expandable: you can customize it by adding sounds and styles as well as audio recordings of rhythm, bass and chords.

## SOUNDS

EVENT SERIES delivers premium sound quality and top-tier voices as we want to deliver the best-in-class professional arranger. 10 Sounds banks come with a brand-new acoustic Grand Piano, a series of Multilayer Electric Pianos, an incredible selection of Strings and Brass, new acoustic and electric guitars, a completely renewed series of Pad, Synth, Bass and Ethnic voices. The instrument features 2 Voice sections, each capable of handling up to 3 simultaneous voices with 2 separate EFX Inserts. The Real Solos are solo instruments such as Trumpet, Violin, Sax, Flute, Oboe etc. with distinctive sounds, refined controls over Aftertouch, Round Robin, Articulation and natural decay of samples, all for delivering the authentic feel of real musicians playing. The Organ section is crafted with particular attention: a rich selection of sounds from original electric organs that can be mixed with the digital Drawbars, combining the high quality textures of the first with the real organ feel of the latter (Twin Organ).

In addition to the outstanding internal voice editing system, EVENT SERIES also features a new 2.5 GB User Sampler: you can upload new factory sound banks (SBK) on the non-volatile Flash memory or create new custom sounds on up to 4 stereo layers. EVENT SERIES displays an external EFX controls on the panel, so you can easily adjust parameters of Brilliance, Chorus, Delay, Tremolo, Overdrive and Wah on the fly.

## MICRO / VOICETRON

EVENT SERIES features a microphone menu with 2 inputs (Micro 1 and Micro 2) with relative gain controls and new dedicated effects, as well as an individual audio output for the Micro 1.

The Voicetron section has been revamped with new harmony effects and many parametric controls for an accurate tone customization.

## PLAYER

The two integrated multimedia players can play a wide range of formats: MIDI, MP3, WAV, TXT, PDF, MP4 and many more. They are equipped with all the classic Karaoke functions such as viewing the Lyrics on an external display, Lead Mute, Crossfade, Search and Fade Out. Use Markers to reach different positions in songs, such as the beginning of a new verse or the end of the chorus. The new JukeBox offers quick access to different selections of music tracks, allowing performers to easily control their gig's workflow.

Stem plays up to five audio tracks simultaneously in perfect sync.

Each audio track has individual Mute and Volume controls, it is also possible to change its pitch and Tempo without altering the pitch of the rhythm.

It is also possible to exclude one or more tracks from playback, for example Piano or Bass, in case you want to play them live. A typical use of Stem is the playback of backing tracks with or without singing (Minus One), a particularly useful application for singers, guitarists in a live performance, but also for reed instrument soloists such as sax or trumpet.

## CONNECTIVITY

EVENT SERIES has dedicated connections for audio, video and file management. Two separate pairs of outputs, in addition to the main outputs, provide seamless routing flexibility to independently control the various sound sources.

The high impedance and balanced inputs allow you to connect any sound source to the keyboard, such as a microphone, a guitar, a smartphone, or a tablet. Connect a compatible HDMI touchscreen monitor to display the lyrics or to control the instrument in mirror mode. A bigger control surface offers more flexibility and an easier access to all the EVENT SERIES functions, both in studio and on stage. In addition to the physical connections, Bluetooth and wireless modules allow you to stream audio from external devices, such as smartphones and tablets and remote control the instrument via the KETRON app.

## ACCORDION

When controlled by a MIDI accordion, EVENT SERIES becomes the hearth of the show. Using the Classic mode, the accordionist can select different sounds for the right and the left hand. These combinations can be saved as Registrations and can be recalled in any moment of the performance.

The jazz accordionist can also greatly benefit from the internal drum styles.

## GUITAR

The EVM is particularly suitable also for the solo Guitar entertainer, thanks to the Guitar Input with dedicated Effects (Chorus, Reverb, Delay, Distortion, Cabinet Speaker simulation etc.). With a suitable audio-to-Midi conversion system you can connect to the module even a regular electric or acoustic guitar.

## DIGITAL PIANO/KEYBOARDS

The ideal and most immediate connection for the EVM is undoubtedly the one with Digital Pianos, Master keyboards, other Arrangers, Electronic organs and any other MIDI keyboard. The module is conveniently set up for performance with Arranger on the left side of the keyboard and Voice on the right.



## Specifications

Polyphony	216 notes, multitimbral.
Keyboard	76 half weighted keys. 4 Dynamic curves. Pitch and Modulation wheels. Aftertouch. Portamento. Legato Mono_Poly. Transposer +/- 24. Octave +/- 2. Expr. Pedal with 6 curves.
Controls	15 sliders with RGB Led indicator. Brightness and color controls. 8 potentiometers for external EFX control.
Display	7" touch capacitive. Brightness control. 5 different skin colors.
Factory Sounds	10 Voice groups: Piano, Strings, Organ, Brass, Sax, Pad, Synth, Guitar, Bass, Ethnic. 464 Preset Voices. Voice 1, Voice 2, each Voice with up to 3 different sounds. Drawbars. Factory Advanced Voice Editing. High quality multilayer Sounds with a vast selection of Real Solos ®. Factory overwrite and restore. Up to 1.280 User Voices available. Arabic scale and key shift programmable per Voice.
User Sounds	2,5 GB free storage in non-volatile Flash memory (1,5 GB for additional Factory Sound Banks – 1 GB for User samples). Sample Editor: up to 8.192 samples (max 6 seconds per sample). Up to 4 layered stereo instruments (Voice or Drum Set). Advanced editor with Split, Octave, Level, Range, Tune, Cut off, Velocity, Adsr. Sample Loop utilities. User Drum kits.
Adsr/Filter	Separate sound controls for Attack, Decay, Sustain, LFO, Cut Off and Resonance.
Drum Set	62 Stereo Drums kits. 32 User Drum kits with Remap, Filter, Tune, FX controls. Drum Mixer: 9 sections with separate controls for level, pan, reverb, pitch, velocity compression. 86 Midi Drum styles (Pattern) available on Grv1_Loop section.
Drawbars	9 digital drawbars. Slow-Fast Rotor. Overdrive, Click, Vibrato, Reverb, Percussion. Full programmability. 24 Organ Presets. Twin Organ: possibility to mix PCM and Digital organ tones for a wide stereo sound reproduction.
Arranger	Over 500 Styles. Real Styles, featuring a mix of Midi and audio parts (see below), Live and Midi Styles. 10 groups: Ballad, Pop, Dance, Rock, Swing, Latin, Country, Folk, Party, Unplugged. 3 Intro, 3 Ending, Fill to End, ABCD, 4 Fills, 4 Break. Reintro, Count In, Pause, Key Start, Key Stop, Variation. User Styles with unlimited store capabilities. 5 Midi Chords and Bass. Close, Parallel, Logic mode. 3 x Lower with Mono/Poly function. Chord Variation. Varitone. Voice to ABCD. Auto Fill, Fill to Arrange, Fill to Aftertouch. Chord modes: Easy1, Easy2, Easy3, Fingered 1, Fingered 2. Orch. Variation Morphing. Rootless mode. Manual Bass, To Lowest, To Root. Bassist and Pianist mode (Standard/Expert). Bass and Chord Lock.
Live Drums	580 Live Drums with a complete Arranger structure (3 Intros, 3 Endings, ABCD, 4 Fills, 4 Breaks). Reverb and 3 band Parametric Equalizer with 10 presets, programmable on each style. Drum Boost. Possibility to load external User Live Drums. Drum Lock.
Grooves	3 x independent Groove sections. Huge library of more than 780 Latin percussions, Electro and Acoustic Drum loops, Single percussion hits. Groove to Variation. Separate volume and EFX controls.
Live Guitars	216 sliced Guitar patterns including Long Chords. Separate volume and EFX controls.
Real Chord	More than 300 Real audio accompaniments covering a full chord range (up to 13 different chords). A wide variety of electric, acoustic, and jazz guitars patterns and other orchestral sequences perfectly synchronized to Midi. Dedicated Insert EFX with full editor, programmable for each style. Possibility to load external User Real Chords.
Real Bass	256 Real audio Bases synchronized to Midi. Twin Bass: possibility to switch Midi or Audio on the same style. Support to external User audio Bases. 3 band Parametric Equalizer with 10 Presets, programmable on each style. Possibility to load external User Real Bases.
Style Modeling	Navigate and choose Drums, Grooves, Bass and Chords from the massive Midi and Audio Library. Multichord and Multibass templates.





Style Edit	Advanced pattern recording and editing. Copy, Quantize, Velocity, Octave functions. Special quantize available for oriental styles (7/8, 9/8, 13/8, etc.).
Registrations	4 Banks with unlimited Registrations controlling the global set up of the keyboard.
Performance	Provides fast access to Styles, Registrations with Style, Mp3, Wav or Midi files. 7 Sets with unlimited file storage.
Play Mode	Master, Accord/Style, Accord/Classic, Organist.
Phrase	Real time recording and play for Style chord sequences.
Custom Slider	2 x Custom slider (alternative to Lower 2 And 3) assignable to Micro, Arranger sections, Drum filter and other functions.
Footswitch	4 programmable Set. Assignable to the most relevant machine functions and features.
Arabic Scale	16 sets. 6 scale memories.
Dsp	Reverb, Chorus, Phaser, Flanger, Overdrive, Distortion, Tremolo, Autopan, Equalizer. 2 stereo EFX Insert assigned to Voice and Voice 2, 1 Insert to Arranger chords, 1 Insert to Real Chord. External panel controls: Overdrive, Brilliance, Chorus/Wah Depth and Rate, Delay Feedback and Level, Reverb Time, and Level. 64 Single Presets and 64 Chain Effects. Deep editing.
Stem	4 Scenes. 5 audio tracks per scene to be played simultaneously. Lead track, Transpose, Time Stretching, Loop, Solo, Mute, Autoplay. Fixed pitch for Drum section. Support for external User Stems.
Player	2 separate Player units feat. Transpose, Audio Time stretching, GM, Jukebox, Playlists, Drum Remix, Markers, Lyrics, Cross Fade, Search, PFL, Midi Mix, Karaoke Backgrounds. Support for wav, midi, mp3, mp4, avi, mov, flv, cdg, jpg, png, txt and pdf files.
HD Recording	1 stereo audio track. Midi and Song Style recording.
Audio Multitrack	5+1 audio tracks with separate slider control.
Micro	2 x Micro inputs. Micro 1 (XLR) with gain control. Effect with Reverb, Delay, Equalizer, Pitch shift. Micro 2 (jack) with volume and reverb control.
Voicetron	3 voice vocalizer. Assignable to Arranger or Midi file with Presets, Equalizer, Mode functions.
Video	HDMI connection for displaying lyrics, pictures, and videos. Mirror mode. Up to Full HD Resolution. Support for external touchscreen displays.
Bluetooth	Streaming audio input (ad2p profile).
Wi-Fi	Networked remote control via KETRON app.
Storage	240 GB internal SSD disk (Up to 80 GB reserved for System). Optional external SD Card (up to 512 GB).
Side Connections	2 x USB device. USB Host. HDMI.
Rear Connections	Main Out Left / Right. Aux 1 & Aux 2 (Left/Right). Headphone. Sustain pedal. Volume pedal. Footswitch. Midi In1, Midi In2, Out, Thru. Line In L/R. Micro 1, Micro 2.
Optional	Volume pedal normal or deluxe. Sustain pedal normal or piano type (available also with Footswitch connector). Footswitch 6 or 13 switches. Midi Pedalboard 13 notes (K8). Soft bag. Hard case.
Dim. / Weight	114 x 36,5 x 12,5 cm (44,8 x 14,3 x 5 in) / 14,8 Kg (32,6 lbs.)

\* All specifications and appearances are subject to change without notice.

# EVENT 61



## Specifications

Polyphony	216 notes, multitimbral.
Keyboard	61 half weighted keys. 4 Dynamic curves. Pitch and Modulation wheels. Aftertouch. Portamento. Legato Mono_Poly. Transposer +/- 24. Octave +/- 2. Expr. Pedal with 6 curves.
Controls	15 sliders with RGB Led indicator. Brightness and color controls. 8 potentiometers for external EFX control.
Display	7" touch capacitive. Brightness control. 5 different skin colors.
Factory Sounds	10 Voice groups: Piano, Strings, Organ, Brass, Sax, Pad, Synth, Guitar, Bass, Ethnic. 464 Preset Voices. Voice 1, Voice 2, each Voice with up to 3 different sounds. Drawbars. Factory Advanced Voice Editing. High quality multilayer Sounds with a vast selection of Real Solos ®. Factory overwrite and restore. Up to 1.280 User Voices available. Arabic scale and key shift programmable per Voice.
User Sounds	2,5 GB free storage in non-volatile Flash memory (1,5 GB for additional Factory Sound Banks – 1 GB for User samples). Sample Editor: up to 8.192 samples (max 6 seconds per sample). Up to 4 layered stereo instruments (Voice or Drum Set). Advanced editor with Split, Octave, Level, Range, Tune, Cut off, Velocity, Adsr. Sample Loop utilities. User Drum kits.
Adsr/Filter	Separate sound controls for Attack, Decay, Sustain, LFO, Cut Off and Resonance.
Drum Set	62 Stereo Drums kits. 32 User Drum kits with Remap, Filter, Tune, FX controls. Drum Mixer: 9 sections with separate controls for level, pan, reverb, pitch, velocity compression. 86 Midi Drum styles (Pattern) available on Grv1_Loop section.
Drawbars	9 digital drawbars. Slow-Fast Rotor. Overdrive, Click, Vibrato, Reverb, Percussion. Full programmability. 24 Organ Presets. Twin Organ: possibility to mix PCM and Digital organ tones for a wide stereo sound reproduction.
Arranger	Over 500 Styles. Real Styles, featuring a mix of Midi and audio parts (see below), Live and Midi Styles. 10 groups: Ballad, Pop, Dance, Rock, Swing, Latin, Country, Folk, Party, Unplugged. 3 Intro, 3 Ending, Fill to End, ABCD, 4 Fills, 4 Break. Reintro, Count In, Pause, Key Start, Key Stop, Variation. User Styles with unlimited store capabilities. 5 Midi Chords and Bass. Close, Parallel, Logic mode. 3 x Lower with Mono/Poly function. Chord Variation. Varitone. Voice to ABCD. Auto Fill, Fill to Arrange, Fill to Aftertouch. Chord modes: Easy1, Easy2, Easy3, Fingered 1, Fingered 2. Orch. Variation Morphing. Rootless mode. Manual Bass, To Lowest, To Root. Bassist and Pianist mode (Standard/ Expert ). Bass and Chord Lock.
Live Drums	580 Live Drums with a complete Arranger structure (3 Intros, 3 Endings, ABCD, 4 Fills, 4 Breaks). Reverb and 3 band Parametric Equalizer with 10 presets, programmable on each style. Drum Boost. Possibility to load external User Live Drums. Drum Lock.
Grooves	3 x independent Groove sections. Huge library of more than 780 Latin percussions, Electro and Acoustic Drum loops, Single percussion hits. Groove to Variation. Separate volume and EFX controls.
Live Guitars	216 sliced Guitar patterns including Long Chords. Separate volume and EFX controls.
Real Chord	More than 300 Real audio accompaniments covering a full chord range (up to 13 different chords). A wide variety of electric, acoustic, and jazz guitars patterns and other orchestral sequences perfectly synchronized to Midi. Dedicated Insert EFX with full editor, programmable for each style. Possibility to load external User Real Chords.
Real Bass	256 Real audio Bases synchronized to Midi. Twin Bass: possibility to switch Midi or Audio on the same style. Support to external User audio Bases. 3 band Parametric Equalizer with 10 Presets, programmable on each style. Possibility to load external User Real Bases.
Style Modeling	Navigate and choose Drums, Grooves, Bass and Chords from the massive Midi and Audio Library. Multichord and Multibass templates.



Style Edit	Advanced pattern recording and editing. Copy, Quantize, Velocity, Octave functions. Special quantize available for oriental styles (7/8, 9/8, 13/8, etc.).
Registrations	4 Banks with unlimited Registrations controlling the global set up of the keyboard.
Performance	Provides fast access to Styles, Registrations with Style, Mp3, Wav or Midi files. 7 Sets with unlimited file storage.
Play Mode	Master, Accord/Style, Accord/Classic, Organist.
Phrase	Real time recording and play for Style chord sequences.
Custom Slider	2 x Custom slider (alternative to Lower 2 And 3) assignable to Micro, Arranger sections, Drum filter and other functions.
Footswitch	4 programmable Set. Assignable to the most relevant machine functions and features.
Arabic Scale	16 sets. 6 scale memories.
Dsp	Reverb, Chorus, Phaser, Flanger, Overdrive, Distortion, Tremolo, Autopan, Equalizer. 2 stereo EFX Insert assigned to Voice and Voice 2, 1 Insert to Arranger chords, 1 Insert to Real Chord. External panel controls: Overdrive, Brilliance, Chorus/Wah Depth and Rate, Delay Feedback and Level, Reverb Time, and Level. 64 Single Presets and 64 Chain Effects. Deep editing.
Stem	4 Scenes. 5 audio tracks per scene to be played simultaneously. Lead track, Transpose, Time Stretching, Loop, Solo, Mute, Autoplay. Fixed pitch for Drum section. Support for external User Stems.
Player	2 separate Player units feat. Transpose, Audio Time stretching, GM, Jukebox, Playlists, Drum Remix, Markers, Lyrics, Cross Fade, Search, PFL, Midi Mix, Karaoke Backgrounds. Support for wav, midi, mp3, mp4, avi, mov, flv, cdg, jpg, png, txt and pdf files.
HD Recording	1 stereo audio track. Midi and Song Style recording.
Audio Multitrack	5+1 audio tracks with separate slider control.
Micro	2 x Micro inputs. Micro 1 (XLR) with gain control. Effect with Reverb, Delay, Equalizer, Pitch shift. Micro 2 (jack) with volume and reverb control.
Voicetron	3 voice vocalizer. Assignable to Arranger or Midi file with Presets, Equalizer, Mode functions.
Video	HDMI connection for displaying lyrics, pictures, and videos. Mirror mode. Up to Full HD Resolution. Support for external touchscreen displays.
Bluetooth	Streaming audio input (ad2p profile).
Wi-Fi	Networked remote control via KETRON app.
Storage	240 GB internal SSD disk (Up to 80 GB reserved for System). Optional external SD Card (up to 512 GB).
Side Connections	2 x USB device. USB Host. HDMI.
Rear Connections	Main Out Left / Right. Aux 1 & Aux 2 (Left/Right). Headphone. Sustain pedal. Volume pedal. Footswitch. Midi In1, Midi In2, Out, Thru. Line In L/R. Micro 1, Micro 2.
Optional	Volume pedal normal or deluxe. Sustain pedal normal or piano type (available also with Footswitch connector). Footswitch 6 or 13 switches. Midi Pedalboard 13 notes (K8). Soft bag. Hard case.
Dim. / Weight	92,5 x 36,5 x 12,5 cm (36,41 x 14,3 x 5 in) / 13 Kg (28,66 lbs.)

\* All specifications and appearances are subject to change without notice.



# EVENT CHROM



## Specifications

Polyphony	216 notes, multitimbral.
Keyboard	Chromatic keyed: Right 52, Left 120 basses, 4 Velocity Curves. Programmable touch response. Aftertouch. Portamento. Joystick: Pitch. Modulation. Transposer: +/- 24. Octave: +/- 2.
Controls	15 sliders with RGB Led indicator. Brightness and color controls. 8 potentiometers for external EFX control.
Display	7" touch capacitive. Brightness control. 5 different skin colors.
Factory Sounds	10 Voice groups: Piano, Strings, Organ, Brass, Sax, Pad, Synth, Guitar, Bass, Ethnic. 464 Preset Voices. Voice 1, Voice 2, each Voice with up to 3 different sounds. Drawbars. Factory Advanced Voice Editing. High quality multilayer Sounds with a vast selection of Real Solos ®. Factory overwrite and restore. Up to 1.280 User Voices available. Arabic scale and key shift programmable per Voice.
User Sounds	2,5 GB free storage in non-volatile Flash memory (1,5 GB for additional Factory Sound Banks – 1 GB for User samples). Sample Editor: up to 8.192 samples (max 6 seconds per sample). Up to 4 layered stereo instruments (Voice or Drum Set). Advanced editor with Split, Octave, Level, Range, Tune, Cut off, Velocity, Adsr. Sample Loop utilities. User Drum kits.
Adsr/Filter	Separate sound controls for Attack, Decay, Sustain, LFO, Cut Off and Resonance.
Drum Set	62 Stereo Drums kits. 32 User Drum kits with Remap, Filter, Tune, FX controls. Drum Mixer: 9 sections with separate controls for level, pan, reverb, pitch, velocity compression. 86 Midi Drum styles (Pattern) available on Grv1_Loop section.
Drawbars	9 digital drawbars. Slow-Fast Rotor. Overdrive, Click, Vibrato, Reverb, Percussion. Full programmability. 24 Organ Presets. Twin Organ: possibility to mix PCM and Digital organ tones for a wide stereo sound reproduction.
Arranger	Over 500 Styles. Real Styles, featuring a mix of Midi and audio parts (see below), Live and Midi Styles. 10 groups: Ballad, Pop, Dance, Rock, Swing, Latin, Country, Folk, Party, Unplugged. 3 Intro, 3 Ending, Fill to End, ABCD, 4 Fills, 4 Break. Reintro, Count In, Pause, Key Start, Key Stop, Variation. User Styles with unlimited store capabilities. 5 Midi Chords and Bass. Close, Parallel, Logic mode. 3 x Lower with Mono/Poly function. Chord Variation. Varitone. Voice to ABCD. Auto Fill, Fill to Arrange, Fill to Aftertouch. Chord modes: Easy1, Easy2, Easy3, Fingered 1, Fingered 2. Orch. Variation Morphing. Rootless mode. Manual Bass, To Lowest, To Root. Bassist and Pianist mode (Standard/Expert ). Bass and Chord Lock.
Live Drums	580 Live Drums with a complete Arranger structure (3 Intros, 3 Endings, ABCD, 4 Fills, 4 Breaks). Reverb and 3 band Parametric Equalizer with 10 presets, programmable on each style. Drum Boost. Possibility to load external User Live Drums. Drum Lock.
Grooves	3 x independent Groove sections. Huge library of more than 780 Latin percussions, Electro and Acoustic Drum loops, Single percussion hits. Groove to Variation. Separate volume and EFX controls.
Live Guitars	216 sliced Guitar patterns including Long Chords. Separate volume and EFX controls.
Real Chord	More than 300 Real audio accompaniments covering a full chord range (up to 13 different chords). A wide variety of electric, acoustic, and jazz guitars patterns and other orchestral sequences perfectly synchronized to Midi. Dedicated Insert EFX with full editor, programmable for each style. Possibility to load external User Real Chords.
Real Bass	256 Real audio Baseses synchronized to Midi. Twin Bass: possibility to switch Midi or Audio on the same style. Support to external User audio Baseses. 3 band Parametric Equalizer with 10 Presets, programmable on each style. Possibility to load external User Real Baseses.
Style Modeling	Navigate and choose Drums, Grooves, Bass and Chords from the massive Midi and Audio Library. Multichord and Multibass templates.



Style Edit	Advanced pattern recording and editing. Copy, Quantize, Velocity, Octave functions. Special quantize available for oriental styles (7/8, 9/8, 13/8, etc.).
Registrations	4 Banks with unlimited Registrations controlling the global set up of the keyboard.
Performance	Provides fast access to Styles, Registrations with Style, Mp3, Wav or Midi files. 7 Sets with unlimited file storage.
Play Mode	Master, Accord/Style, Accord/Classic, Organist.
Phrase	Real time recording and play for Style chord sequences.
Custom Slider	2 x Custom slider (alternative to Lower 2 And 3) assignable to Micro, Arranger sections, Drum filter and other functions.
Footswitch	4 programmable Set. Assignable to the most relevant machine functions and features.
Arabic Scale	16 sets. 6 scale memories.
Dsp	Reverb, Chorus, Phaser, Flanger, Overdrive, Distortion, Tremolo, Autopan, Equalizer. 2 stereo EFX Insert assigned to Voice and Voice 2, 1 Insert to Arranger chords, 1 Insert to Real Chord. External panel controls: Overdrive, Brilliance, Chorus/Wah Depth and Rate, Delay Feedback and Level, Reverb Time, and Level. 64 Single Presets and 64 Chain Effects. Deep editing.
Stem	4 Scenes. 5 audio tracks per scene to be played simultaneously. Lead track, Transpose, Time Stretching, Loop, Solo, Mute, Autoplay. Fixed pitch for Drum section. Support for external User Stems.
Player	2 separate Player units feat. Transpose, Audio Time stretching, GM, Jukebox, Playlists, Drum Remix, Markers, Lyrics, Cross Fade, Search, PFL, Midi Mix, Karaoke Backgrounds. Support for wav, midi, mp3, mp4, avi, mov, flv, cdg, jpg, png, txt and pdf files.
HD Recording	1 stereo audio track. Midi and Song Style recording.
Audio Multitrack	5+1 audio tracks with separate slider control.
Micro	2 x Micro inputs. Micro 1 (XLR) with gain control. Effect with Reverb, Delay, Equalizer, Pitch shift. Micro 2 (jack) with volume and reverb control.
Voicetron	3 voice vocalizer. Assignable to Arranger or Midi file with Presets, Equalizer, Mode functions.
Video	HDMI connection for displaying lyrics, pictures, and videos. Mirror mode. Up to Full HD Resolution. Support for external touchscreen displays.
Bluetooth	Streaming audio input (ad2p profile).
Wi-Fi	Networked remote control via KETRON app.
Storage	240 GB internal SSD disk (Up to 80 GB reserved for System). Optional external SD Card (up to 512 GB).
Side Connections	2 x USB device. USB Host. HDMI.
Rear Connections	Main Out Left / Right. Aux 1 & Aux 2 (Left/Right). Headphone. Sustain pedal. Volume pedal. Footswitch. Midi In1, Midi In2, Out, Thru. Line In L/R. Micro 1, Micro 2.
Optional	Volume pedal normal or deluxe. Sustain pedal normal or piano type (available also with Footswitch connector). Footswitch 6 or 13 switches. Midi Pedalboard 13 notes (K8). Soft bag. Hard case.
Dim. / Weight	92,5 x 36,5 x 12,5 cm (36,41 x 14,3 x 5 in) / 13 Kg (28,66 lbs.)



# EVENT X



## Specifications

Polyphony	216 notes, multitimbral.
Controls	12 sliders with RGB Led indicator. Brightness and color controls. 4 Dynamic curves. Aftertouch. Portamento. Legato Mono_Poly. Transposer +/- 24. Octave +/- 2. Expr. Pedal with 6 curves.
Display	7" touch capacitive. Brightness control. 5 different skin colors.
Factory Sounds	10 Voice groups: Piano, Strings, Organ, Brass, Sax, Pad, Synth, Guitar, Bass, Ethnic. 464 Preset Voices. Voice 1, Voice 2, each Voice with up to 3 different sounds. Drawbars. Factory Advanced Voice Editing. High quality multilayer Sounds with a vast selection of Real Solos ®. Factory overwrite and restore. Up to 1.280 User Voices available. Arabic scale and key shift programmable per Voice.
User Sounds	2,5 GB free storage in non-volatile Flash memory (1,5 GB for additional Factory Sound Banks - 1 GB for User samples). Sample Editor: up to 228480 samples (mono, usable 8192, max 6 seconds per sample). Up to 4 layered stereo instruments (Voice or Drum Set). Advanced editor with Split, Octave, Level, Range, Tune, Cut off, Velocity, Adsr. Sample Loop utilities. User Drum kits.
Adsr/Filter	Separate sound controls for Attack, Decay, Sustain, LFO, Cut Off and Resonance.
Drum Set	62 Stereo Drums kits. 32 User Drum kits with Remap, Filter, Tune, FX controls. Drum Mixer: 9 sections with separate controls for level, pan, reverb, pitch, velocity compression. 86 Midi Drum styles (Pattern) available on Grv1_Loop section.
Drawbars	9 digital drawbars. Slow-Fast Rotor. Overdrive, Click, Vibrato, Reverb, Percussion. Full programmability. 24 Organ Presets. Twin Organ: possibility to mix PCM and Digital organ tones for a wide stereo sound reproduction.
Arranger	Over 500 Styles. Real Styles, featuring a mix of Midi and audio parts (see below), Live and Midi Styles. 10 groups: Ballad, Pop, Dance, Rock, Swing, Latin, Country, Folk, Party, Unplugged. 3 Intro, 3 Ending, Fill to End, ABCD, 4 Fills, 4 Break. Reintro, Count In, Pause, Key Start, Key Stop, Variation. User Styles with unlimited store capabilities. 5 Midi Chords and Bass. Close, Parallel, Logic mode. 3 x Lower with Mono/Poly function. Chord Variation. Varitone. Voice to ABCD. Auto Fill, Fill to Arrange, Fill to Aftertouch. Chord modes: Easy1, Easy2, Easy3, Fingered 1, Fingered 2. Orch. Variation Morphing. Rootless mode. Manual Bass, To Lowest, To Root. Bassist and Pianist mode (Standard/Expert ). Bass and Chord Lock.
Live Drums	580 Live Drums with a complete Arranger structure (3 Intros, 3 Endings, ABCD, 4 Fills, 4 Breaks). Reverb and 3 band Parametric Equalizer with 10 presets, programmable on each style. Drum Boost. Possibility to load external User Live Drums. Drum Lock.
Grooves	3 x independent Groove sections. Huge library of more than 780 Latin percussions, Electro and Acoustic Drum loops, Single percussion hits. Groove to Variation. Separate volume and EFX controls.
Live Guitars	216 sliced Guitar patterns including Long Chords. Separate volume and EFX controls.
Real Chord	More than 300 Real audio accompaniments covering a full chord range (up to 13 different chords). A wide variety of electric, acoustic, and jazz guitars patterns and other orchestral sequences perfectly synchronized to Midi. Dedicated Insert EFX with full editor, programmable for each style. Possibility to load external User Real Chords.
Real Bass	256 Real audio Baseses synchronized to Midi. Twin Bass: possibility to switch Midi or Audio on the same style. Support to external User audio Baseses. 3 band Parametric Equalizer with 10 Presets, programmable on each style. Possibility to load external User Real Baseses.
Style Modeling	Navigate and choose Drums, Grooves, Bass and Chords from the massive Midi and Audio Library. Multichord and Multibass templates.



Style Edit	Advanced pattern recording and editing. Copy, Quantize, Velocity, Octave functions. Special quantize available for oriental styles (7/8, 9/8, 13/8, etc.).
Registrations	4 Banks with unlimited Registrations controlling the global set up of the keyboard.
Performance	Provides fast access to Styles, Registrations with Style, Mp3, Wav or Midi files. 7 Sets with unlimited file storage.
Play Mode	Master, Accord/Style, Accord/Classic, Organist.
Phrase	Real time recording and play for Style chord sequences.
Footswitch	4 programmable Set. Assignable to the most relevant machine functions and features.
Arabic Scale	16 sets. 6 scale memories.
Dsp	Reverb, Chorus, Phaser, Flanger, Overdrive, Distortion, Tremolo, Autopan, Equalizer. 2 stereo EFX Insert assigned to Voice and Voice 2, 1 Insert to Arranger chords, 1 Insert to Real Chord. 64 Single Presets and 64 Chain Effects. Deep editing.
Stem	4 Scenes. 5 audio tracks per scene to be played simultaneously. Lead track, Transpose, Time Stretching, Loop, Solo, Mute, Autoplay. Fixed pitch for Drum section. Support for external User Stems.
Player	2 separate Player units feat. Transpose, Audio Time stretching, GM, Jukebox, Playlists, Drum Remix, Markers, Lyrics, Cross Fade, Search, PFL, Midi Mix, Karaoke Backgrounds. Support for wav, midi, mp3, mp4, avi, mov, flv, cdg, jpg, png, txt and pdf files.
HD Recording	1 stereo audio track. Midi and Song Style recording.
Audio Multitrack	5+1 audio tracks with separate slider control.
Micro	2 x Micro inputs. Micro 1 (XLR) with gain control. Effect with Reverb, Delay, Equalizer, Pitch shift. Micro 2 (jack) with volume and reverb control.
Voicetron	3 voice vocalizer. Assignable to Arranger or Midi file with Presets, Equalizer, Mode functions.
Video	HDMI connection for displaying lyrics, pictures, and videos. Mirror mode. Up to Full HD Resolution. Support for external touchscreen displays.
Bluetooth	Streaming audio input (ad2p profile).
Wi-Fi	Networked remote control via KETRON app.
Storage	240 GB internal SSD disk (80 GB reserved for System). Optional external SD Card (up to 512 GB).
Side Connections	2 x USB device. USB Host. HDMI.
Rear Connections	Main Out Left / Right. Headphone. Sustain pedal. Volume pedal. Footswitch. Midi In1, Midi In2, Out, Thru. Micro 1, Micro 2.
Optional	Volume pedal normal or deluxe. Sustain pedal normal or piano type (available also with Footswitch connector). Footswitch 6 or 13 switches. Midi Pedalboard 13 notes (K8). Soft bag. Hard case.
Dim. / Weight	43 x 26 x 10,5 cm (16,9 x 10,2 x 4,1 in) / 3,9 Kg (8,6 lbs.)



# EVM



## EVENT in a BOX!

It seems incredible, but our highly acclaimed EVENT flagship is now entirely contained within this remarkably compact module, featuring the same Sounds, the same Real Styles and all other functions of the keyboard. Perhaps no other arranger product has ever been created with such a concentration of musical possibilities. The EVM is easily adaptable to various forms of use since it is fully Midi compatible. If you are considering a compact, easy-to-carry device that can replace your arranger keyboard in a live gig situation, during plane trips or in studio recording sessions, the EVM is undoubtedly the perfect choice for you.

Specifications	
Polyphony	216 notes, multitimbral.
Controls	4 Dynamic curves. Aftertouch. Portamento. Legato Mono_Poly. Transposer +/- 24. Octave +/- 2. Expr. Pedal with 6 curves.
Factory Sounds	10 Voice groups: Piano, Strings, Organ, Brass, Sax, Pad, Synth, Guitar, Bass, Ethnic. 464 Preset Voices. Voice 1, Voice 2, each Voice with up to 3 different sounds. Drawbars. Factory Advanced Voice Editing. High quality multilayer Sounds with a vast selection of Real Solos ®. Factory overwrite and restore. Up to 1.280 User Voices available. Arabic scale and key shift programmable per Voice.
User Sounds	2,5 GB free storage in non-volatile Flash memory (1,5 GB for additional Factory Sound Banks - 1 GB for User samples). Sample Editor: up to 228480 samples (mono, usable 8192, max 6 seconds per sample). Up to 4 layered stereo instruments (Voice or Drum Set). Advanced editor with Split, Octave, Level, Range, Tune, Cut off, Velocity, Adsr. Sample Loop utilities. User Drum kits.
Adsr/Filter	Separate sound controls for Attack, Decay, Sustain, LFO, Cut Off and Resonance.
Drum Set	62 Stereo Drums kits. 32 User Drum kits with Remap, Filter, Tune, FX controls. Drum Mixer: 9 sections with separate controls for level, pan, reverb, pitch, velocity compression. 86 Midi Drum styles (Pattern) available on Grv1_Loop section.
Drawbars	9 digital drawbars. Slow-Fast Rotor. Overdrive, Click, Vibrato, Reverb, Percussion. Full EDITING. 24 Organ Presets. Twin Organ: possibility to mix PCM and Digital organ tones for a wide stereo sound reproduction.
Arranger	Over 500 Styles. Real Styles, featuring a mix of Midi and audio parts (see below), Live and Midi Styles. 10 groups: Ballad, Pop, Dance, Rock, Swing, Latin, Country, Folk, Party, Unplugged. 3 Intro, 3 Ending, Fill to End, ABCD, 4 Fills, 4 Break. Reintro, Count In, Pause, Key Start, Key Stop, Variation. User Styles with unlimited store capabilities. 5 Midi Chords and Bass. Close, Parallel, Logic mode. 3 x Lower with Mono/Poly function. Chord Variation. Varitone. Voice to ABCD. Auto Fill, Fill to Arrange, Fill to Aftertouch. Chord modes: Easy1, Easy2, Easy3, Fingered 1, Fingered 2. Orch. Variation Morphing. Rootless mode. Manual Bass, To Lowest, To Root. Bassist and Pianist mode (Standard/Expert). Bass and Chord Lock.
Live Drums	580 Live Drums with a complete Arranger structure (3 Intros, 3 Endings, ABCD, 4 Fills, 4 Breaks). Reverb and 3 band Parametric Equalizer with 10 presets, programmable on each style. Drum Boost. Possibility to load external User Live Drums. Drum Lock.
Grooves	3 x independent Groove sections. Huge library of more than 780 Latin percussions, Electro and Acoustic Drum loops, Single percussion hits. Groove to Variation. Separate volume and EFX controls.
Live Guitars	216 sliced Guitar patterns including Long Chords. Separate volume and EFX controls.
Real Chord	More than 300 Real audio accompaniments covering a full chord range (up to 13 different chords). A wide variety of electric, acoustic, and jazz guitars patterns and other orchestral sequences perfectly synchronized to Midi. Dedicated Insert EFX with full editor, programmable for each style. Possibility to load external User Real Chords.
Real Bass	256 Real audio Bases synchronized to Midi. Twin Bass: possibility to switch Midi or Audio on the same style. Support to external User audio Bases. 3 band Parametric Equalizer with 10 Presets, programmable on each style. Possibility to load external User Real Bases.
Style Modeling	Navigate and choose Drums, Grooves, Bass and Chords from the massive Midi and Audio Library. Multichord and Multibass templates.





Style Edit	Advanced pattern recording and editing. Copy, Quantize, Velocity, Octave functions. Special quantize available for oriental styles (7/8, 9/8, 13/8, etc.).
Registrations	4 Banks with unlimited Registrations controlling the global set up of the instrument.
Performance	Provides fast access to Styles, Registrations with Style, Mp3, Wav or Midi files. 7 Sets with unlimited file storage.
Play Mode	Master, Accord/Style, Accord/Classic, Organist.
Phrase	Real time recording and play for Style chord sequences.
Footswitch	4 programmable Set. Assignable to the most relevant instrument functions and features.
Arabic Scale	16 sets. 6 scale memories.
Dsp	Reverb, Chorus, Phaser, Flanger, Overdrive, Distortion, Tremolo, Autopan, Equalizer. 2 stereo EFX Insert assigned to Voice and Voice 2, 1 Insert to Arranger chords, 1 Insert to Real Chord. 64 Single Presets and 64 Chain Effects. Deep editing.
Stem	4 Scenes. 5 audio tracks per scene to be played simultaneously. Lead track, Transpose, Time Stretching, Loop, Solo, Mute, Autoplay. Fixed pitch for Drum section. Support for external User Stems.
Player	2 separate Player units feat. Transpose, Audio Time stretching, GM, Jukebox, Playlists, Drum Remix, Markers, Lyrics, Cross Fade, Search, PFL, Midi Mix, Karaoke Backgrounds. Support for wav, midi, mp3, mp4, avi, mov, flv, cdg, jpg, png, txt and pdf files.
HD Recording	1 stereo audio track. Midi and Song Style recording.
Audio Multitrack	5+1 audio tracks.
Inputs	1 Micro input (combo XLR) with phantom power (48V) and with gain control. Effect with Reverb, Delay, Equalizer, Pitch shift. Second Input (TRS) for microphone, line and instrument level signals with volume and reverb control.
Voicetron	3 voice vocalizer. Assignable to Arranger or Midi file with Presets, Equalizer, Mode functions.
Video	HDMI connection for displaying lyrics, pictures, and videos (up to Full HD Resolution). Remote control via HDMI (1280x720 Resolution capable screen is required).
Bluetooth	Streaming audio input (ad2p profile).
Remote control	Remote control via VNC (Wi-Fi direct, LAN direct or LAN DHCP) or via HDMI. Connection mode led on front panel and connection mode switches on rear panel.
Wi-Fi	Remote control via VNC (Wi-Fi direct).
LAN	Remote control via Ethernet cable (direct connection or DHCP).
Storage	240 GB internal SSD disk (80 GB reserved for System). Optional external SD Card (up to 512 GB).
Front Connections	Headphones, Input, Micro with direct output.
Rear Connections	Main Out Left / Right. Sustain pedal. Volume pedal. Footswitch. Midi In1, Midi In2, Out, Thru, 2 x USB device. USB Host. HDMI, Ethernet.
Optional	Monitor. Volume pedal normal or deluxe. Sustain pedal normal or piano type (available also with Footswitch connector). Footswitch 6 or 13 switches. Midi Pedalboard 13 notes (K8). Backpack.
Dim. / Weight	27 x 20 x 6 cm (10,6 x 7,8 x 2,3 in) / 2 Kg (41 lbs.)

\* All specifications and appearances are subject to change without notice.

# EVM PLUS



The KETRON EVM Plus is a new professional sound and arranger module, a remarkably compact unit that integrates an extensive range of advanced functions.

It incorporates all the main specifications of the EVENT keyboard, including sounds, styles, and multimedia capabilities. A newly designed built-in 10.1" tiltable display with adjustable brightness ensures excellent visibility and smooth navigation through all menus.

Fully MIDI compatible, the EVM Plus can be easily connected to any keyboard, organ, digital piano, accordion, or MIDI guitar.

The outstanding musical capabilities of the EVM Plus—in terms of arrangements and sounds—combined with an integrated microphone and vocalizer section, as well as a multimedia player supporting MIDI files, MP3, WAV, and video playback, make this module a truly unique tool in its category. Thanks to its extremely compact size, the EVM Plus is also highly recommended for transport, live performances, and air travel.

EVM Plus: the ideal choice for the modern solo entertainer.

## Specifications

Display	10.1" tiltable touchscreen display.
Polyphony	216 notes, multitimbral.
Controls	4 Dynamic curves. Aftertouch. Portamento. Legato Mono_Poly. Transposer +/- 24. Octave +/- 2. Expr. Pedal with 6 curves.
Factory Sounds	10 Voice groups: Piano, Strings, Organ, Brass, Sax, Pad, Synth, Guitar, Bass, Ethnic. 464 Preset Voices. Voice 1, Voice 2, each Voice with up to 3 different sounds. Drawbars. Factory Advanced Voice Editing. High quality multilayer Sounds with a vast selection of Real Solos ®. Factory overwrite and restore. Up to 1.280 User Voices available. Arabic scale and key shift programmable per Voice.
User Sounds	2,5 GB free storage in non-volatile Flash memory (1,5 GB for additional Factory Sound Banks - 1 GB for User samples). Sample Editor: up to 228480 samples (mono, usable 32.768, max 6 seconds per sample). Up to 4 layered stereo instruments (Voice or Drum Set). Advanced editor with Split, Octave, Level, Range, Tune, Cut off, Velocity, Adsr. Sample Loop utilities. User Drum kits.

Adsr/Filter	Separate sound controls for Attack, Decay, Sustain, LFO, Cut Off and Resonance.
Drum Set	62 Stereo Drums kits. 32 User Drum kits with Remap, Filter, Tune, FX controls. Drum Mixer: 9 sections with separate controls for level, pan, reverb, pitch, velocity compression. 86 Midi Drum styles (Pattern) available on Grv1_Loop section.
Drawbars	9 digital drawbars. Slow-Fast Rotor. Overdrive, Click, Vibrato, Reverb, Percussion. Full EDITING. 24 Organ Presets. Twin Organ: possibility to mix PCM and Digital organ tones for a wide stereo sound reproduction.
Arranger	Real Styles, featuring a mix of Midi and audio parts (see below), Live and Midi Styles. 10 groups: Ballad, Pop, Dance, Rock, Swing, Latin, Country, Folk, Party, Unplugged. 3 Intro, 3 Ending, Fill to End, ABCD, 4 Fills, 4 Break. Reintro, Count In, Pause, Key Start, Key Stop, Variation. User Styles with unlimited store capabilities. 5 Midi Chords and Bass. Close, Parallel, Logic mode. 3 x Lower with Mono/Poly function. Chord Variation. Varitone. Voice to ABCD. Auto Fill, Fill to Arrange, Fill to Aftertouch. Chord modes: Easy1, Easy2, Easy3, Fingered 1, Fingered 2. Orch. Variation Morphing. Rootless mode. Manual Bass, To Lowest, To Root. Bassist and Pianist mode (Standard/ Expert ). Bass and Chord Lock.
Live Drums	Live Drums with a complete Arranger structure (3 Intros, 3 Endings, ABCD, 4 Fills, 4 Breaks). Reverb and 3 band Parametric Equalizer with 10 presets, programmable on each style. Drum Boost. Possibility to load external User Live Drums. Drum Lock.
Grooves	3 x independent Groove sections. Huge library of more than 780 Latin percussions, Electro and Acoustic Drum loops, Single percussion hits. Groove to Variation. Separate volume and EFX controls.
Live Guitars	Sliced Guitar patterns including Long Chords. Separate volume and EFX controls.
Real Chord	Real audio accompaniments covering a full chord range (up to 13 different chords). A wide variety of electric, acoustic, and jazz guitars patterns and other orchestral sequences perfectly synchronized to Midi. Dedicated Insert EFX with full editor, programmable for each style. Possibility to load external User Real Chords.
Real Bass	Real audio Bases synchronized to Midi. Twin Bass: possibility to switch Midi or Audio on the same style. Support to external User audio Bases. 3 band Parametric Equalizer with 10 Presets, programmable on each style. Possibility to load external User Real Bases.
Style Modeling	Navigate and choose Drums, Grooves, Bass and Chords from the massive Midi and Audio Library. Multichord and Multibass templates. Advanced pattern recording and editing. Copy, Quantize, Velocity, Octave functions. Special quantize available for oriental styles (7/8, 9/8, 13/8, etc.).
Registrations	4 Banks with unlimited Registrations controlling the global set up of the instrument.
Performance	Provides fast access to Styles, Registrations with Style, Mp3, Wav or Midi files. 7 Sets with unlimited file storage.
Play Mode	Master, Accord/Style, Accord/Classic, Organist.
Phrase	Real time recording and play for Style chord sequences.
Footswitch	4 programmable Set. Assignable to the most relevant instrument functions and features.
Arabic Scale	16 sets. 6 scale memories.
Dsp	Reverb, Chorus, Phaser, Flanger, Overdrive, Distortion, Tremolo, Autopan, Equalizer. 2 stereo EFX Insert assigned to Voice and Voice 2, 1 Insert to Arranger chords, 1 Insert to Real Chord. 64 Single Presets and 64 Chain Effects. Deep editing.
Stem	4 Scenes. 5 audio tracks per scene to be played simultaneously. Lead track, Transpose, Time Stretching, Loop, Solo, Mute, Autoplay. Fixed pitch for Drum section. Support for external User Stems.
Player	2 separate Player units feat. Transpose, Audio Time stretching, GM, Jukebox, Playlists, Drum Remix, Markers, Lyrics, Cross Fade, Search, PFL, Midi Mix, Karaoke Backgrounds. Support for wav, midi, mp3, mp4, avi, mov, flv, cdg, jpg, png, txt and pdf files.
HD Recording	1 stereo audio track. Midi and Song Style recording.
Audio Multitrack	5+1 audio tracks.
Inputs	1 Micro input (combo XLR) with phantom power (48V) and with gain control. Effect with Reverb, Delay, Equalizer, Pitch shift. Second Input (TRS) for microphone, line and instrument level signals with volume and reverb control.
Voicetron	3 voice vocalizer. Assignable to Arranger or Midi file with Presets, Equalizer, Mode functions.
Video	HDMI connection for displaying lyrics, pictures, and videos (up to Full HD Resolution).
Bluetooth	Streaming audio input (ad2p profile).
Remote control	Remote control via VNC (Wi-Fi direct, LAN direct or LAN DHCP). Connection mode led on front panel and connection mode switches on rear panel.
Wi-Fi	Remote control via VNC (Wi-Fi direct).
LAN	Remote control via Ethernet cable (direct connection or DHCP).
Storage	240 GB internal SSD disk (80 GB reserved for System). Optional external SD Card (up to 512 GB).
Front Connections	Headphones, Input, Micro with direct output.
Rear Connections	Main Out Left / Right. Sustain pedal. Volume pedal. Footswitch. Midi In1, Midi In2, Out, Thru, 2 x USB device. USB Host. HDMI, Ethernet.
Optional	Volume pedal normal or deluxe. Sustain pedal normal or piano type (available also with Footswitch connector). Footswitch 6 or 13 switches. Midi Pedalboard 13 notes (K8). Backpack.
Dim. / Weight	27 x 20 x 6 cm (10,6 x 7,8 x 2,3 in) / 2,5 Kg (5,51 lbs.)





### EVS – Versatile, Pocket-Sized Professional Sound Module

The EVS is a compact and versatile professional sound module designed for musicians and producers seeking high-quality sounds in a portable format. Its internal board incorporates the sound engine and drum kits from the renowned EVENT keyboard, delivering a rich selection of premium orchestral sounds. The EVS features 128 user-programmable factory presets, each capable of combining up to three independent GM voices. It also includes a 9-drawbar virtual organ, with dedicated rotary effect, overdrive, and percussion options. An advanced desktop Voice Editor allows users to create custom sounds by layering up to three voices with effects, and save them directly to the EVS's internal memory. The unit also comes with 1GB of user flash memory for additional sound banks, either provided by KETRON or created by the user using the Dream 5000 sound card. Connectivity options include both USB and classic MIDI In/Out ports, allowing the EVS to function simultaneously as a sound module for a MIDI master keyboard and as a MIDI file player. With instant access to high-quality sounds and professional features, the EVS is the ideal companion for MIDI backing, live performance, and home studio production.

Specifications	
Maximum polyphony	144 notes
Programs	128 3 voices per program Deep Program customization
Wavetable	4 GB wavetable 3 GB factory sounds + 1 GB user sounds (Sound Banks) Over 500 Voices, 63 Drum Sets
Multitimbral	16 +3 parts
Effects	Deep editing of various effects (reverb, chorus, compressor, overdrive, distortion, eq, wah wah, tremolo, vibrato, flanger, phaser, rotary, delay) Each Program has its own effects
Digital drawbars	Unlimited polyphony Percussion (Second/Third, Slow/Fast, Soft/Hard) Vibrato/Chorus (V1, C1, V2, C2, V3, C3) Overdrive Highly customizable rotary effect
Midi	In, thru, USB midi
Audio	Main out L/R, headphones
Controls	Volume
Program editor	Free program editor available for both PC and macOS Required for creating sounds and loading soundbanks
Power supply	External power supply 5V USB-C powered
Dimensions	15 cm x 4 cm x 10 cm (5,91 in x 1,57 in x 3,95 in)
Weight	0.65 Kg (22,93 oz)

\* All specifications and appearances are subject to change without notice.

# GLOBE



The **GLOBE** represents the best synthesis of the world-renowned **EVENT** series. It delivers all the core features of KETRON's flagship model in terms of sounds, styles, and functionality, now housed in a compact 61-key keyboard. Equipped with a joystick, aftertouch, ribbon controller, a 7" touchscreen display, micro-vocalizer, and advanced multimedia capabilities, GLOBE fully embodies the concept of a "World's Arranger." It offers a rich and diverse selection

of multi-ethnic musical repertoires, including Italian folklore, Latin and Caribbean styles, Brazilian music, American country, as well as European and Mediterranean arrangements. Designed for contemporary live performance, GLOBE is a professional arranger keyboard that is lightweight, easy to transport, and offered at an accessible price point.



## Specifications

Polyphony	216 notes, multitimbral.
Keyboard	61 keys. 4 Dynamic curves.
Controls	Aftertouch. Portamento. Legato Mono/Poly. Transposer +/- 24. Octave +/- 2. Sustain pedal. Volume/Expr. Pedal with 6 curves. Joystick with Pitch and Modulation. 2 Articulations. Ribbon controller. Arabic Scale. Arabic Set. Koma. 10 sliders with led indicator. Drums Mute.
Display	7" touch capacitive. Brightness control. 5 different skin colors.
Factory Sounds	10 Voice groups: Piano, Strings, Organ, Brass, Sax, Pad, Synth, Guitar, Bass, Ethnic. Preset Voices. Voice 1, Voice 2, each Voice with up to 3 different sounds. Advanced Voice Editing. High quality multilayer Sounds. Factory overwrite and restore. Up to 1.280 User Voices available. Scale and key shift programmable per Voice.
User Sounds	4 GB free storage in non-volatile Flash memory ( 2 GB for additional Factory Sound Banks – 2 GB for User samples). Sample Editor with up to 32.768 samples ( max 6 seconds per sample). Up to 4 layered stereo instruments (Voice or Drum Set). Advanced editor with Split, Octave, Level, Range, Tune, Cut off, Velocity, Adsr. Sample Loop utilities. User Drum kits.
Adsr/Filter	separate sound controls for Attack, Decay, Sustain, LFO, Cut Off and Resonance.
K-Tune	capability to allocate Wav files to the keys of the keyboard.
Drum Set	62 Stereo Drums kits. 32 User Drum kits with Remap, Filter, Tune, FX controls. Drum Mixer: 9 sections with separate controls for level, pan, reverb, pitch, velocity compression. 86 Midi Drum styles (Pattern) available on Grv1_Loop section.
Arranger	Real Styles, a mix of Midi and audio parts (see below), Live and Midi Styles. 10 groups: Ballad, Pop, Dance, Rock, Swing, Latin, Country, Folk, Party, Unplugged. 3 Intro, 3 Ending, Fill to End, ABCD, 4 Fills, 4 Break. Reintro, Count In, Pause, Key Start, Key Stop, Variation. User Styles with unlimited store capabilities. 5 Midi Chords and Bass. Close, Parallel, Logic mode. 3 x Lower with Mono/Poly function. Chord Variation. Voice to ABCD. Auto Fill, Fill to Arrange, Fill to Aftertouch. Chord modes: Easy1, Easy2, Easy3, Fingered 1, Fingered 2. Orch. Variation Morphing. Rootless mode. Manual Bass, To Lowest, To Root. Bassist and Pianist mode (Standard/Expert ). Bass and Chord Lock.
Live Drums	Over 600 Live Drums. Reverb and 3 band Parametric Equalizer with 10 presets, programmable on each style. Drum Boost. Possibility to load external User Live Drums. Drum Lock.
Grooves	3 x independent Groove sections. Huge library of more than 780 Latin percussions, Electro and Acoustic Drum loops, Single percussion hits. Groove to Variation. Separate volume and EFX controls.
Live Guitars	Midi sliced Guitars. Up to 250 Guitar patterns including Long Chords. Separate volume and Effects.
Real Chord	Real audio accompaniments covering a full chord range (up to 13 different chords). A wide variety of electric, acoustic, and jazz guitars patterns and other orchestral sequences perfectly synchronized to Midi. Dedicated Insert EFX with full editor, programmable for each style. Possibility to load external User Real Chords.
Real Bass	Real audio Baseses synchronized to Midi. Twin Bass: possibility to switch Midi or Audio on the same style. Support to external User audio Baseses. 3 band Parametric Equalizer with 10 Presets, programmable on each style. Possibility to load external User Real Baseses.
Style Modeling	navigate and choose Drums, Grooves, Bass and Chords from the massive Midi and Audio Library. Multichord and Multibass templates.
Style Edit	advanced pattern recording and editing. Copy, Quantize, Velocity, Octave functions. Special quantize available for oriental styles (7/8, 9/8, 13/8, etc.).
Registrations	4 Banks with unlimited Registrations controlling the global set up of the keyboard.
Performance	provides fast access to Styles, Registrations with Style, Mp3, Wav or Midi files. 7 Sets with unlimited file storage.
Live Tab	additional Style sections. 2 x percussion grooves, 2 x Arp&Lick, 2 x Multichord, 2 x Audio efx with separate volume controls. User Tab.





Play Mode	Master, Accord/Style, Accord/Classic, Organist.
Phrase	real time recording and play for Style chord sequences.
Dsp	Reverb, Chorus, Phaser, Flanger, Overdrive, Distortion, Tremolo, Autopan, Equalizer. 2 Stereo EFX Inserts (one dedicated to Voice and one to Style/Midifiles). 64 Single Presets and 64 Chain Effects. Deep editing. Dedicated reverb for Arranger section.
Player	Transpose, Audio Time stretching, GM, Jukebox, Playlists, Drum Remix, Markers, Lyrics, Cross Fade, Search, Midi Mix, Karaoke Backgrounds. Support for wav, midi, mp3, mp4, avi, mov, flv, cdg, jpg, png, txt and pdf files.
KTune	audio Wav files can be assigned to keys. Synchronization with Style (Bar, Beat).
Record	1 stereo audio track. HD Recording. Midi and Song Style recording.
Audio Multitrack	5+1 audio tracks with separate track control.
Power	110-240v 50/60 Hz 1A.
Sustain	Standard jack (TS) for Sustain pedal connection (optional).
Volume Pedal	Standard stereo jack (TRS) for Volume pedal connection optional).
Footswitch	Standard multi-pin plug for optional multi-switch pedal connection. Compatible with Ketron FS6/FS13. 20 programmable Set. Assignable to the most relevant machine functions and features.
Midi	MIDI IN1 (GM, KEYBOARD), MIDI OUT ports for transmitting and receiving MIDI messages with other MIDI modules and controllers.
Output	Standard mono jack pair (unbalanced) for connecting the instrument to a PA STEREO system: LEFT (Left Mono) and RIGHT (Right Mono). We strongly recommend using stereo connections to get the best performance.
Headphone	Standard stereo jack (TRS) for headphones connection.
Micro 1 In	Standard mono combo plug (TRS/XLR) for dynamic microphone connection with 48V phantom power. Gain, Reverb, Delay, Equalizer, Pitch shift.
Micro 1 Out	Standard jack for duplicating the MICRO 1 input signal.
Micro 2 In	Standard mono jack for connection of other auxiliary instruments such Keyboard, Expander, Guitar or Dynamic Microphone. Gain, Volume, Reverb.
Voicetron	3 voice Vocalizer. Assignable to Arranger or Midi file with Presets, Equalizer, Mode functions.
Video	HDMI connection for displaying lyrics, pictures, and videos. Mirror mode. Up to Full HD Resolution. Support for external touchscreen displays.
Bluetooth	Streaming audio input (ad2p profile).
WiFi	remote control via VNC.
Storage	240 GB internal SSD disk. Optional external SD Card (up to 512 GB).
Side Connections	2x USB-A device standard ports for connecting external memory device, such as USB pens or HDDs. 1x USB-B host standard port for connecting the instrument to PC as an external memory device or as an USB MIDI controller. 1x HDMI standard port for transmitting video data to compatible computer monitor, video projector or digital television. SD card: slot for connecting an external SD card (SDXC).
Rear Connections	Main Out Left / Right. Headphone. Sustain pedal. Volume pedal. Footswitch. Midi In. Midi Out. Line In L/R. Micro 1, Micro 2.
Optional	Volume pedal normal or deluxe. Sustain pedal normal or piano type (available also with Footswitch connector). Footswitch 6 or 13 switches. Midi Pedalboard 13 notes (K8). Soft bag. Hard case.
Dimensions	99,5 x 36.6 x 11,5 cm (39,1 x 14,41 x 4,53 inch.).
Weight	11 Kg (24,2 lbs).

\* All specifications and appearances are subject to change without notice.

# FUSION



**KETRON Middle East** is proud to announce the Ketron **FUSION**, which is not just an arranger keyboard, it is a complete Audio Arranger that truly performs like a real live band. Every Audio Style in the FUSION is recorded by real professional musicians, capturing the natural groove, dynamics, and soul that only human performance can deliver. The result is an unparalleled musical experience where rhythm, bass, guitars, and accompaniments breathe, interact, and respond exactly like a live ensemble.





Designed with deep musical authenticity in mind, the FUSION sets a new benchmark for Audio Arranger technology, blending cutting-edge innovation with organic sound realism. It is an instrument that doesn't imitate music, it plays it. For Oriental and regional music lovers, the FUSION truly stands apart. It offers the most advanced and expressive Audio Arabic styles and sounds available, covering the entire Middle East, the Arab world, as well as Turkey and the Balkan regions. From powerful traditional rhythms to modern hybrid grooves, every style is crafted to reflect the true character of its musical heritage.

With the Ketron FUSION, you don't play alone. You perform with a real band at your fingertips, inspired, expressive, and alive. Powered by the passion and innovation of the exceptional team of musicians at KETRON Middle East, the FUSION represents a new era where technology and musicianship finally become one.

Produced by KETRON and distributed  
by KETRON Middle East

For info: [info@ketron.ai](mailto:info@ketron.ai)  
For inquiries: [sales@ketron.ai](mailto:sales@ketron.ai)

# FUSION



## Specifications

Polyphony	216 notes, multitimbral.
Keyboard	61-note light weighted action with velocity and aftertouch. 4 Dynamic curves.
Controls	Aftertouch. Portamento. Legato Mono/Poly. Transposer +/- 24. Octave +/- 2. Sustain pedal. Volume/Expr. Pedal with 6 curves. Joystick with Pitch and Modulation. 2 Articulations. Ribbon controller. 10 sliders with led indicator.
Display	7" touch capacitive display. Brightness control. 5 different skin colors.
Factory Sounds	10 Voice Families: Piano, Strings, Organ, Brass, Sax, Pad, Synth, Guitar, Bass, Ethnic. 464 Factory Presets. A single Preset can be made with up to 5 different sounds. Second Voice. High quality multilayer sounds with a great selection of Real Solos ® and a large variety of oriental instruments. Advanced Voice Editing. Factory overwrite and restore. Up to 1.280 User Voices available. Preset programmable Arabic scale and key shif.
User Sounds	4 GB non-volatile Flash memory for additional sounds (2 GB for Sound Banks and 2 GB for User Samples). Sample Editor : up to 32.768 samples (max 6 seconds per sample). 128 stereo instruments (Voice or Drum Set), up to 4 layers per instrument and up to 64 splits per layer. Advanced editor with Split, Octave, Level, Range, Tune, Cut off, Velocity, Adsr. Sample Loop utilities. User Drum kits.
Adsr/Filter	separate controls for Attack, Decay, Sustain, Lfo, Cut Off and Resonance.
Drum Set	44 Drums kits. 18 Oriental Kits. 32 User Drum kits with Remap, Filter, Tune, FX controls. Drum Mixer: 9 sections with separate controls for level, pan, reverb, pitch, velocity compression. 86 Midi Drum styles (Pattern) on Grv1_Loop section.
Arranger	More than 550 International Styles. Audio, Live and Midi styles. Freeze real control. 260.
Live Styles	10 groups: Ballad, Pop, Dance, Rock, Swing, Latin, Country, Folk, Party, Ethnic. 3 Intro, 3 Ending, Fill to End, ABCD, 4 Fills, 4 Break. Reintro, Count In, Pause, Key Start, Key Stop, Variation. User Styles with unlimited store capabilities. 5 Midi Chords and Bass. Close, Parallel, Logic mode. 3 x Lower with Mono/Poly function. Chord Variation. Varitone. Voice to ABCD. Auto Fill, Fill to Arrange, Fill to Aftertouch. Chord modes : Easy1, Easy2, Easy3, Fingered 1, Fingered 2. Orch. Variation Morphing. Rootless mode. Manual Bass, To Lowest, To Root. Bassist and Pianist mode (Standard/Expert).
Live Drums	Live Drums with a complete Arranger structure (3 Intros, 3 Endings, ABCD, 4 Fills, 4 Breaks). Oriental and Latin Percussions loops. Reverb and 3 band Parametric Equalizer with 10 presets, programmable on each style. Drum Boost. Possibility to load external User Live Drums.
Grooves	3 x independent Groove sections. Huge library of more than 780 Latin percussions, Electro and Acoustic Drum loops, Single percussion hits. Groove to Variation. Separate volume and EFX controls.
Live Guitars	sliced Guitar patterns including Long Chords. Separate volume and EFX controls.
Real Chord	Real audio accompaniments covering a full chord range (up to 13 different chords). A big variety of electric, acoustic and jazz guitars patterns and other orchestral sequences synchronized to Midi. Dedicated Insert EFX with full editor, programmable for each style. Possibility to load external User Real Chords. Possibility to modify the Style voices with Adsr, filter and Q.
Real Bass	Real audio Bases.Twin Bass. Support to external User audio Bases. 3 band Parametric Equalizer with 10 Presets, programmable on each style.
Style Modeling	navigate and choose Drums, Grooves, Bass and Chords from the massive Midi and Audio Library. Multichord and Multibass templates.
Style Edit	advanced pattern recording and editing. Copy, Quantize, Velocity, Octave functions. Special quantize available for oriental styles (7/8, 9/8, 13/8, etc.). Single GM voice edit with ADSR and Filter.
Dj_Style	Groove, Multichord, Arp&Lick, Audio Efx.
Registrations	4 Banks with unlimited Registrations controlling the global set up of the keyboard.
Performance	fast access to Styles, Registrations, Mp3, Wav, Midi files and Subfolders. 7 Sets with unlimited file storage.
Stage Mode	for managing Styles, Registrations and Voices. Quick access from physical buttons.
Play Mode	Master, Accord/Style, Accord/Classic, Organist.



Phrase	real time recording and play for Style chord sequences.
Arabic Scale	16 sets. 6 scale memories.
Dsp	Reverb, Chorus, Phaser, Flanger, Overdrive, Distortion, Tremolo, Autopan, Equalizer. 2 Stereo EFX Inserts (one dedicated to Voice and one to Style/Midifiles). 64 Single Presets and 64 Chain Effects. Deep editing. Dedicated reverb for Arranger section.
Player	Transpose, Audio Time stretching, GM, Jukebox, Playlists, Drum Remix, Markers, Lyrics, Cross Fade, Search, Midi Mix, Karaoke Backgrounds. Support for wav, midi, mp3, mp4, avi, mov, flv, cdg, jpg, png, txt and pdf files.
KTune	audio Wav files can be assigned to keys. Synchronization with Style (Bar, Beat).
Record	1 stereo audio track.
Audio Multitrack	5+1 audio tracks with separate track control.
Power	110-240v 50/60 Hz 1A.
Sustain	Standard jack (TS) for Sustain pedal connection (optional).
Volume Pedal	Standard stereo jack (TRS) for Volume pedal connection optional).
Footswitch	Standard multi-pin plug for optional multi-switch pedal connection. Compatible with Ketron FS6/FS13. 20 programmable Set. Assignable to the most relevant machine functions and features.
Midi	MIDI IN1 (GM, KEYBOARD), MIDI OUT ports for transmitting and receiving MIDI messages with other MIDI modules and controllers.
Output	Standard mono jack pair (unbalanced) for connecting the instrument to a PA STEREO system: LEFT (Left Mono) and RIGHT (Right Mono). We strongly recommend using stereo connections to get the best performance.
Aux 1 & Aux 2	Two separate pair of auxiliary outputs in addition to the main ones. Can be used to independently control the various sound sources inside the instrument, resulting in great routing flexibility.
Headphone	Standard stereo jack (TRS) for headphones connection.
Micro 1 In	Standard mono combo plug (TRS/XLR) for dynamic microphone connection with 48V phantom power. Gain, Reverb, Delay, Equalizer, Pitch shift.
Micro 1 Out	Standard jack for duplicating the MICRO 1 input signal.
Micro 2 In	Standard mono jack for connection of other auxiliary instruments such Keyboard, Expander, Guitar or Dynamic Microphone. Gain, Volume, Reverb.
Voicetron	3 voice vocalizer. Assignable to Arranger or Midi file with Presets, Equalizer, Mode functions.
Video	HDMI connection for displaying lyrics, pictures and videos. Mirror mode. Up to Full HD Resolution. Support for external touchscreen displays.
Bluetooth	Streaming audio input (ad2p profile).
WiFi	remote control via VNC.
Storage	240 GB internal SSD disk. Optional external SD Card (up to 512 GB).
Side Connections	2x USB-A device standard ports for connecting external memory device, such as USB pens or HDDs. 1x USB-B host standard port for connecting the instrument to PC as an external memory device or as an USB MIDI controller. 1x HDMI standard port for transmitting video data to compatible computer monitor, video projector or digital television. SD card: slot for connecting an external SD card (SDXC).
Rear Connections	Main Out Left / Right. Headphone. Sustain pedal. Volume pedal. Footswitch. Midi In. Midi Out. Line In L/R. Micro 1, Micro 2. Aux 1 & 2.
Optional	Volume pedal normal or deluxe. Sustain pedal normal or piano type (available also with Footswitch connector). Footswitch 6 or 13 switches. Midi Pedalboard 13 notes (K8). Soft bag. Trolley for bag. Hard case.
Dimensions	99,5 x 36.6 x 11,5 cm (39,1 x 14,41 x 4,53 inch.).
Weight	11 Kg (24,2 lbs).

\* Specifications and appearance are subject to change without notice.



## DIGITAL ACCORDIONS



The **P37** (piano-type) and **B46** (button-type) digital accordions are modern instruments firmly rooted in a time-honored tradition and culture. Built from high-quality wood, their keyboards use the same mechanical parts as on an acoustic instrument. Similarly, their bellows need to be moved and generate the airflow typical of an acoustic accordion in order to produce sound. These instruments were developed with the most demanding players in mind—conservatory students, professional performers, musicians, and teachers.

Great care was taken to preserve the feel of an acoustic accordion and all those little details that have turned acoustic accordion instruments into coveted classics that appeal to the mind, the hands and the heart.

But make no mistake: the P37 and B46 are quintessentially about technological innovation. These evolved accordions are both special and unique, waiting for you to make them your own and to convey your emotions through your music like never before on an electronic instrument. The P37 and B46 are perfect for all accordionists, combining tradition, cutting-edge technology, and aesthetics in one instrument.

Specifications	
KEYBOARD, BASS & BELLOWS	
Right Hand	37 keys piano type, velocity sensitive (F~F), 76 velocity-sensitive buttons
Left Hand	Piano and button type: 96 velocity-sensitive bass buttons Standard, Free Bass mode, Orch. Bass, Orch. Chord, Orch. Free Bass
Treble Mode (only B46 button type)	System 1 Europe: C Griff Europe, C Griff Fin, D Griff 1, User 1~4, System 2 Bajan: B Griff Bajan, C Griff 2, D Griff 2, User 1~4
Bass & Chord Modes	2 Bs Rows, 3 Bs Rows A-7th, 3 Bs Rows A-5dim, 3 Bs Rows B-7th, 3 Bs Rows B-5dim, 3 Bs Rows Bx-7th, 3 Bs Rows Belgium 1, 3 Bs Rows Belgium 2, User 1~4
Free Bass Modes	Minor 3rd, Bajan, Fifth, North Europe, Finnish, Belgium1, Belgium2, Kravtsov, Moschino1, Moschino2, User 1~4
Bellows	Natural Air Flow System combined with Advanced “Dynamic Bellows Behavior” technology to manage the behavior of the bellows
Bellows curves	Standard, Light, Heavy, Fixed Low, Fixed Med, Fixed High
SOUND SOURCE	
Max polyphony	256-voice polyphony
Accordion Types	32 Accordion Types, each including: - Right-hand registers: 14 Accordion registers (7x2), 14 Orchestra1 registers (7x2), 14 Orchestra2 registers (7x2) - Left-hand registers: 10 Bass & Chord registers (5x2), 10 Free Bass registers (5x2), 10 Orchestra Bass registers (5x2), 10 Orchestra Chord registers (5x2), 10 Orchestra Free Bass registers (5x2), 9 Drum Sets
Reed Footages	7x Accordion, 5x Bass & Chord, 5x Free Bass
Reed Detune	Micro-tuning, programmable for each reed of every register
Waveform Expansion	600MB, dynamic internal area for loading new sounds
ORCHESTRAL SOUNDS	
Right Hand	109 for Orchestra 1 and 2: 14 (7x2) selectable in real time, the others selectable via the Menu, 109 Harmony sounds
Left Hand	109 for Orchestral Bass, Orchestral Chord, Orchestral Free Bass and Orchestral Free Bass Chord: 10 selectable in real time, the others selectable via the Menu
Drum Sets	9 Drum Sets
USER PROGRAMS	
Song or genre-specific settings	140 memories, 10 User Program banks x 14 registers (7x2)
EFFECTS	
Reverb, Chorus	Reverb: 8 types, Chorus: 8 types
MXF 1 & 2	32 multi-effects for Orchestra 1 and Orchestra 2 (separate processors)
Equalizer	4-band EQ for internal speakers, 4-band EQ for Output Left & Right
Cassotto Simulation	Programmable for each reed
OPERATIONAL MODES	
Right-hand keyboard modes	Layer, Zone, High, Low
Accordion Chord Voicing	3 types: Accordion, 3-5, 1-5
Orchestra Chord Voicing	10 types: Mode1, Mode2, Mode3, Mode 4, Mode 5, Mode1-2, Mode1-3, Mode2-3, Cycle, Random
Harmony Function	4 combinations: Simple, Chord, Octave Up, Octave Down
Bass&Chord with Percussion	Programmable drum/percussion sounds for Bass/Orch Bass: 2 rows, Chord/Orchestra Chord: 4 rows
Audio Player and Audio Recording	WAV file playback from a micro-SD card, WAV file recording to an SD card
OTHERS	
Display	Colour TFT LCD, 2.2”, 240 x 320 pixels
Rated Power Output / Speakers	2 x 20 W / 2x 8 cm (full-range)
Power supply	AC adaptor Input 100~240V, 1.5A, 50~60Hz, Output 12.6V= 3A, Rechargeable Li-ion battery pack (7.4V-10000mAh) Expected battery life under continuous use: 9 hours (speakers on), 12 hours (speakers off)
Onboard connectors	OUTPUT jacks L/Mono (Treble), R/Mono (Bass): 1/4” phone type, PHONES jack: 3.5 mm stereo miniature phone type, MIDI IN and MIDI OUT connectors SD card port, USB COMPUTER port (USB Hi-Speed MIDI support), DC IN jack
DIMENSIONS AND WEIGHT	
Dimensions	Piano type: 460 (W) x 260 (D) x 435 (H) mm, Button type: 400 (W) x 250 (D) x 415 (H) mm
Weight (excluding strap, AC adaptor)	Piano type: 9 kg (including battery), Button type: 8.5 kg (including battery)

## TWIN ARRAY PLUS

**Code: 8SISTAP**

A powerful active system!

2x aart T 28 A + 2x aart SUB 15 A







### aart T 28 A

The aart T 28 A is a self powered, bi-amped 2-Way high-performance multipurpose loudspeaker system, designed for professional portable and installed applications. With a 90°H x 60°V coverage pattern it combines high output capability with excellent sound performance in a multiangle compact enclosure, made of 15 mm plywood. It features a classic combination of two powerful 8" speaker for MF/LF frequency range arranged in D'Appolito clubbed-shaped irradiation, and one 1,75" voice coil, 1" (25mm) exit HF compression driver for extended high frequency response. The integrated high performance Class D amplifier delivers outstanding dynamic and excellent headroom. The 4 DSP presets and clearly arranged Input - Output section enable high application flexibility. The versatile aart T 28 A suits for speech and music applications as a stand-alone fullrange loudspeaker, or MF/HF speaker in sound reinforcement systems.

### Specifications

**Type:** Self-powered, two-way bi-amped, multifunctional  
**Frequency Range (-10dB):** 60 Hz - 20 kHz  
**Frequency Response (+- 3dB):** 75 Hz - 18 kHz  
**Coverage Pattern:** H 90° x V 60° nominal (user-rotatable)  
**Power Handling:** 400 W continuous, 1600 W peak  
**System Sensitivity (1w/1m):** 99 dB  
**Maximum SPL (Calculated at 1m):** 125 dB continuous, 131 dB peak  
**HF Driver:** 1,75" voice coil, 1" exit compression driver  
**LF Driver:** 2x 8", 2" voice coil speaker aaCRAAFT  
**Crossover:** Active / DSP  
**Protection:** Dual-band limiter  
**Active Tuning / Features:** 4 DSP presets, 2x Line/Mic IN level & switch, Line/Mix OUT switchable  
**Enclosure:** Multi-angle, 15 mm birch plywood  
**Finish:** Black polyurea coating  
**Fittings:** 7x M8 inserts, 1x bar handle, pole socket, U-bracket optional  
**Protective Grille:** Black perforated steel with acoustic transparent foam backing  
**Connectors:** 2x XLR / 6.35 Jack Combo, 1x XLR  
**Dimensions mm (WxHxD):** 250 x 700 x 250  
**Weight:** 14.6 kg



### aart SUB 15 A

The Solton aart SUB 15 A is a self-powered single 15" direct-radiating high performance subwoofer system. It has been designed to add high-output, high-impact bass response to the mid-high and fullrange loudspeaker systems in various mobile and installed applications. The aart 15 Sub features a long-excursion, 15" ,4" (100mm) voice coil LF transducer, and a low distortion port design in a compact reflex enclosure made of 15 mm plywood. The integrated high performance Class D amplifier delivers outstanding dynamic and excellent headroom. The integrated pole mount socket (M20) enables the use of a distance rod in combination with a MF/HF cabinet as a system. The Sub 15A has many features that make it a versatile subwoofer system.

### Specifications

**Type:** Self-powered, Single 15", bass-reflex, subwoofer  
**Frequency Range (-10dB):** 35 Hz -250 Hz  
**Frequency Response (+- 3dB):** 40 Hz -200 Hz  
**Coverage Pattern:** Omni  
**Power Handling:** 800 W continuous, 3200 W peak  
**System Sensitivity (1w/1m):** 99 dB  
**Maximum SPL (Calculated at 1m):** 127 dB continuous, 133 dB peak  
**LF Driver:** 15", 4" voice coil speaker  
**Crossover:** Active, Variable 80 - 200 Hz  
**Protection:** Limiter  
**Active Tuning/Features:** Volume, Variable crossover 80 – 200 Hz, Phase switch  
**Enclosure:** 15 mm birch plywood  
**Finish:** Black polyurea coating  
**Fittings:** 2 x Handles, M20 pole socket  
**Protective Grille:** Black perforated steel with acoustic transparent foam backing  
**Connectors:** 2x Inputs XLR / 6.35 Jack Combo, 2x Thru XLR  
**Dimensions mm (WxHxD):** 460 x 590 x 580  
**Weight:** 31 kg

## ACT SAT

### Code: 8SISAS

A powerful active system!

Consists of 2x T8 and 1x aart SUB 315







### aart T8

The aart T 8 is a two-way high-performance, multipurpose loudspeaker system designed for professional portable and installed applications. With a 90°H x 60°V coverage pattern it combines high output capability with excellent sound performance in a trapezoidal compact enclosure, made of 15 mm plywood. It features a powerful 8" speaker for MF/LF frequency range, and a 1,35" HF compression driver for extended high frequency response. An advanced passive crossover, with PTC driver protection, matches the components working perfectly together and allows full-range application without additional electronics. The versatile aart 8 suits for speech and music applications as a stand-alone fullrange loudspeaker or MF/HF speaker in sound reinforcement systems.

### Specifications

**Type:** Fullrange, two-way, passive  
**Frequency Range (-10dB):** 70 Hz - 20 kHz  
**Frequency Response (+/- 3dB):** 80 Hz - 18 kHz  
**Coverage Pattern:** H 90° x V 60° nominal (user-rotatable)  
**Power Handling:** 200 W continuous, 800 W peak  
**System Sensitivity (1w/1m):** 95 dB  
**Maximum SPL (Calculated at 1m):** 118 dB continuous, 124 dB peak  
**HF Driver:** 1,35" voice coil, 1" exit compression driver  
**LF Driver:** 8", 2" VC speaker aaCRAAFT  
**Nominal Impedance:** 4 ohms  
**Crossover:** 2,7 kHz passive  
**Protection:** PTC driver protection  
**Enclosure:** Birch plywood  
**Finish:** Black polyurea coating  
**Fittings:** 7x M8 inserts, 1x bar handle, pole-socket, WB 1 wall mount optional  
**Protective Grille:** Black perforated steel with acoustic transparent foam backing  
**Connectors:** 1 x NL4, Pins 1+/1-  
**Dimensions mm (WxHxD):** 263 x 423 x 240  
**Weight:** 8.5 kg



### aart SUB 315

The Solton aart Sub 315 is a single 15" self-powered direct-radiating high performance subwoofer system. It has been designed to add high-output, high-impact bass response to the mid-high and fullrange loudspeaker systems in various mobile and installed applications. The aart Sub315 features a long-excursion, 15",4" (100mm) voice coil LF transducer, and a low distortion port design in a compact reflex enclosure made of 15 mm plywood. The integrated high performance Class D amplifiers deliver outstanding dynamic and excellent headroom for the subwoofer and the satellite cabinets as well. For satellites 2x 350 W cont 4ohm, 2x 1050 W peak / For Subwoofer 800 W cont, 2400 W peak. The integrated pole mount socket (M20) enables the use of a distance rod in combination with a MF/HF cabinet as a system. The aart SUB 315 has many features that make it a versatile subwoofer system.

### Specifications

**Type:** Self-powered, Single 15", bass-reflex, subwoofer  
**Frequency Range (-10dB):** 35 Hz - 200 Hz  
**Frequency Response (+/- 3dB):** 40 Hz - 150 Hz  
**Coverage Pattern:** Omni  
**Power Handling:** TOP 2x 350 W cont 4ohm, 2x 1050 W max / SUB 800 W cont, 2400 W max  
**System Sensitivity (1w/1m):** 99 dB  
**Maximum SPL (Calculated at 1m):** 127 dB continuous, 133 dB peak  
**LF Driver:** 15", aaCRAAFT, Long stroke 4" voice coil woofer  
**Crossover:** Active / DSP  
**Protection:** Limiter  
**Active Tuning / Features:** 5 DSP presets, Level sub, Level sat, Variable Low-pass freq (Hz), stereo/mono switch  
**Enclosure:** 15 mm birch plywood  
**Finish:** Black polyurea coating  
**Fittings:** 2 x Handles, M20 pole socket, 75mm wheels mounted  
**Protective Grille:** Black perforated steel with acoustic transparent foam backing  
**Connectors:** Line in Left & Right Jack/XLR Combo, Link out Left & Right XLR  
**Dimensions mm (WxHxD):** 475 x 530 x 620  
**Weight:** 32 kg

## ACTIVE STUDIO MONITOR SM6 Code: 8CASSM6

The SOLTON SM6 is a near-field studio monitor designed as a vertically aligned 2-way system. The SM6 features a 6.5" woofer with Kevlar cone, which enables bass reproduction down to 50 Hz, while the tweeter's cone offers a pure and extended high frequency range of up to 22 kHz. The metal rear panel of the SM6 houses contains the bass reflex port as well as numerous controls and analogue connections. The tweeter is powered by a 25 watt amplifier, while a 60 watt amplifier drives the woofer. This power pack in a slim housing delivers an impressive maximum sound pressure level of 108 dB SPL per pair. The wide frequency response, wide dynamic range, excellent transient response and small size make the SM6 ideal for use in small control rooms for music production, video post-production and broadcast.



### Specifications

**Type:** Self-powered, two-way bi-amped, Studio Monitor  
**Coverage Pattern:** H 90° x V 60° nominal  
**Power Handling:** 85 W continuous, 340 W peak  
**HF Driver:** 1" voice coil Neodym  
**LF Driver:** 6,5", Custom Speaker with Kevlar Cone  
**Crossover:** 2.6 kHz  
**Protection:** Limiter  
**Active Tuning/Features:** HF/LF Trim switch, Logo light switch, power ON/OFF  
**Enclosure:** MDF  
**Finish:** Black, Logo with light  
**Connectors:** 1x XLR/6.35 Jack Combo, 1x RCA  
**Dimensions mm (WxHxD):** 225 x 236 x 324  
**Weight:** 7.8 kg

## MIRA Code: 8CASMIRA

MIRA, SOLTON's first battery-powered speaker, combines perfect sound with the latest technology to provide a truly portable and wireless audio experience. With an unbeatable price-performance ratio, MIRA sets new standards and surpasses comparable products on the market. Whether for live music, voice amplification or audio playback - MIRA convinces musicians, DJs, event service providers, fitness and activity trainers as well as professional and leisure users alike. Thanks to its first-class sound quality, intuitive operation and sophisticated all-in-one PA system design, MIRA brings professional audio performance closer to a wider audience than ever before. With a 90° x 60° radiation, MIRA delivers impressive sound despite its compact design. Equipped with a powerful 8-inch woofer and a precise 1.35-inch titanium tweeter, it sets new standards in its product class - uncompromising in sound and performance.



### Specifications

**Type:** Self-powered, Accu cabinet, multifunctional  
**Coverage Pattern:** H 90° x V 60° nominal  
**Power Handling:** 100 W continuous, 400 W peak  
**HF Driver:** 1,35" voice coil, 1" exit compression driver  
**LF Driver:** 8", speaker  
**Protection:** Limiter  
**Active Tuning/Features:** 4 DSP presets, 2x Line/Mic IN level, Mix OUT, Bluetooth TWS, Reverb  
**Enclosure:** Multi-angle, PP composite  
**Finish:** Black  
**Fittings:** Handle, pole-mount socket  
**Protective Grille:** Black perforated steel  
**Connectors:** 2x XLR / 6.35 Jack Combo, 1x XLR Out, AUX IN  
**Dimensions mm (WxHxD):** 270 x 400 x 280  
**Weight:** 6,8kg



## 6CX Code: CAS6CX

The Solton 6CX is a hi-fidelity, 2-way coaxial loudspeaker system, has been designed for variety of professional applications where excellent sound quality, wide bandwidth, and high efficiency are required in a compact package. The 6CX features one 1,35" / 1" exit HF compression driver, and for the MF/LF section one high-performance 6,5" speaker. The coaxial transducer arrangement and advanced passive crossover, with PTC driver protection, matches the components working perfectly together, and producing exceptionally clear output with smooth tonal response.

In combination with a 90° conical directivity its perfect for speech and music reproduction in nearfield. The integral mounting points (M8) and the optional WB1 mounting make deployment such as wall mounted, ceiling-mounted or flown quick and easy. 6CX is well-suited for use stand alone as a main speaker or together with a subwoofer in a smaller environment. Its also well-suited for live monitoring front fill applications with full PA systems, for down-firing applications, such as under balcony or high ceiling commercial spaces.



## Specifications

**Type:** Two-way, Coaxial, Passive, Fullrange  
**Frequency Range (-10dB):** 80 Hz - 20 kHz  
**Frequency Response (+- 3dB):** 90 Hz – 18 kHz  
**Coverage Pattern:** H 90° x V 90° nominal  
**Power Handling:** 180 W continuous, 360 W program  
**System Sensitivity (1w/1m):** 94 dB  
**Maximum SPL (Calculated at 1m):** 117 dB continuous, 120 dB peak  
**HF Driver:** 1,35 VC, compression driver  
**LF Driver:** 6,5" aaCRAAFT  
**Nominal Impedance:** 8 ohms  
**Crossover:** 1.7 kHz  
**Protection:** PTC driver protection  
**Enclosure:** 15 mm birch plywood  
**Finish:** 2 layer, Black textured paint  
**Fittings:** 4 x M8 points, WB1 optional  
**Protective Grille:** Black perforated steel with acoustic transparent foam backing  
**Connectors:** 2x NL 4, 1+/-1- IN  
**Dimensions mm (WxHxD):** 260 x 250 x 220  
**Weight:** 5.5 kg



# MONITOR



## Code: 9MO001 - MONITOR 15,6" TOUCH SCREEN

**Screen Size:** 15.6-inch

**Resolution:** 1920x1080

**Contrast:** 45% NTSC

**Viewing Angle:** Full View

**Speaker:** 8Ω/1W

**Size:** 354x218x5~9mm

**Panel:** IPS Screen

**Brightness:** 250cd/m<sup>2</sup>

**Refresh Rate:** 60Hz

**Net Weight:** 697g

**Port:** Type-C 3.1 Port, Type-C Fast Charging Port, Mini Hdmi Port

## STAND AND POWER SUPPLY



**Code:** 9SU005

**FOR EVENTX**

**Code:** 9SU006

**FOR EVM/EVM PLUS**



**Code:** 1ALGST40A09

**9V 40W FOR EVM PLUS,  
EVENT61, EVENT CHROM,  
EVENT X, EVM, EVENT**

# PEDALS



**Code:** 9AC092

EFFECTS PEDAL FS1 PIANO TYPE



**Code:** 9AC114

SUSTAIN PEDAL PIANO TYPE



**Code:** 9PE002

SUSTAIN PEDAL PIANO TYPE  
FOR DIGITAL PIANOS



**Code:** 9PE003

PEDAL 3 SWITCHES FOR  
DIGITAL PIANOS





Code: 9AC089

EFFECTS PEDAL FS1



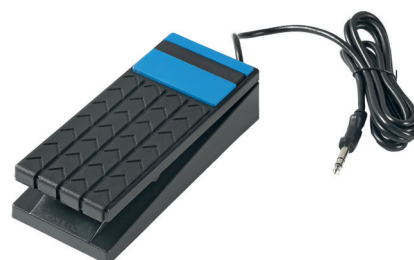
Code: 9PE007

SUSTAIN PEDAL



Code: 9PE005

SUSTAIN PEDAL FOR  
DIGITAL PIANOS



Code: 9PE010

VOLUME PEDAL



Code: 9PE006

DELUXE VOLUME PEDAL



Code: 9AC103

EFFECTS PEDAL FS6



Code: 9AC093

EFFECTS PEDAL FS13



Code: 9PEMK8

MIDI PEDALBOARD 13 NOTES K8

## HARD CASES



Code: 9VA016

HARD CASE FOR EVENTX



Code: 9VA018

FOR EVENT  
(with power supply/music stand housing)



Code: 9VA019

FOR EVENT61/CHROM/FUSION/GLOBE  
(with power supply/music stand housing)



## DELUXE HARD CASES



**Code: 9VA018D**

**DELUXE HARD CASE FOR EVENT  
(with power supply/music stand housing)**

**Code: 9VA019D**

**DELUXE HARD CASE FOR EVENT61/EVENT CHROM/ FUSION/GLOBE  
(with power supply/music stand housing)**



## BAGS



**Code:** 9BO001

**BAG FOR EVS**



**Code:** 9BO003

**BAG FOR KEYBOARD 76 KEYS**

**Code:** 9BO004

**BAG FOR KEYBOARD 61 KEYS**



**Code:** 9BO010

**BAG FOR EVENTX**



**Code:** 9BO011

**BACKPACK**

## NOTES



Our models are trade mark registered by copyright.  
It is strictly forbidden any partial or complete copy of this catalogue.

ALL PRODUCTS ARE ENGINEERED IN ITALY.

## **KETRON s.r.l.**

Via Taliercio, 7  
60131 - Ancona - Italy  
ph. +39 071 285 771  
[ketron@ketron.it](mailto:ketron@ketron.it)  
[www.ketron.it](http://www.ketron.it)

Graphic Design:  
Sara Manini  
Simoncini Studio

Photo:  
Franco Simoncini

Printing January 2025





KETRON